

LakeHouse Cove at Waterside

1060 Waterline Court (Lot 423)
Clipper Series

Cay
\$999,900

Cay

Available January 2025

2,135 sq. ft.
3 Bedroom
2.5 Bath
3 Car Tandem Garage
(Inventory Home To Be Garage Right)



New Home Features

- Coastal A Elevation
- Tray Ceilings in Foyer, Den, and Owner's Suite
- Premium Cabinets with GE Profile Appliances
- Upgraded Quartz Countertops in Kitchen and Bathrooms
- Upgraded Kitchen Sink
- Below Kitchen Cabinet LED Lighting
- Upgraded Plank Tile in Kitchen, Bath 2, Foyers 1 & 2, Mud Room, Laundry Room, Dinette, Great Room, Owner's Suite, Owner's Walk-in Closet, Suite 2, and Suite 3
- Additional Cabinets with GE Profile Wine Center in Mud Room
- Frameless Glass with Pivot Door with Silver Finish Brackets, No Header in Bath 2
- Upgraded Moen Plumbing Fixtures
- Additional Lighting Added
- Additional Electrical Added
- Great Room Opens to Large Lanai
- Rough-in for Future Summer Kitchen
- Impact Rated Windows and Sliding Glass Doors

Community Features

- Amenity Center featuring: Lakehouse, Pool, Spa, Fitness Center, Boathouse, Play Areas, Event Lawn, Sunset Lawn, Poolside Cabanas, Bocce Court, Pickleball Courts, Firepits, 2 Dog Parks, Trail System, and Water Taxi Pick Up Location
- Convenient Access to Downtown Waterside Place
- Close to Gulf Coast Beaches
- Minutes Away to World Class Shopping and Dining
- Close to Several Area Hospitals
- Sarasota International Airport - 25 Minutes
- Tampa International Airport - 70 Minutes



Homes by Towne
homesbytowne.com

LAKEHOUSE COVE AT WATERSIDE MODEL CENTER: 7915 Waterbend Trail | Sarasota, FL 34240 | 941-361-2536

HOMES BY TOWNE REALTY INC. SALES ASSOCIATES:

Sarah Lowry slowry@homesbytowne.com | 941-400-9026
Rita Suarez rsuarez@homesbytowne.com | 239-220-6341

Lee Trompke ltrompke@homesbytowne.com | 941-737-8538

Marissa Stephenson mstephenson@homesbytowne.com | 941-448-1755

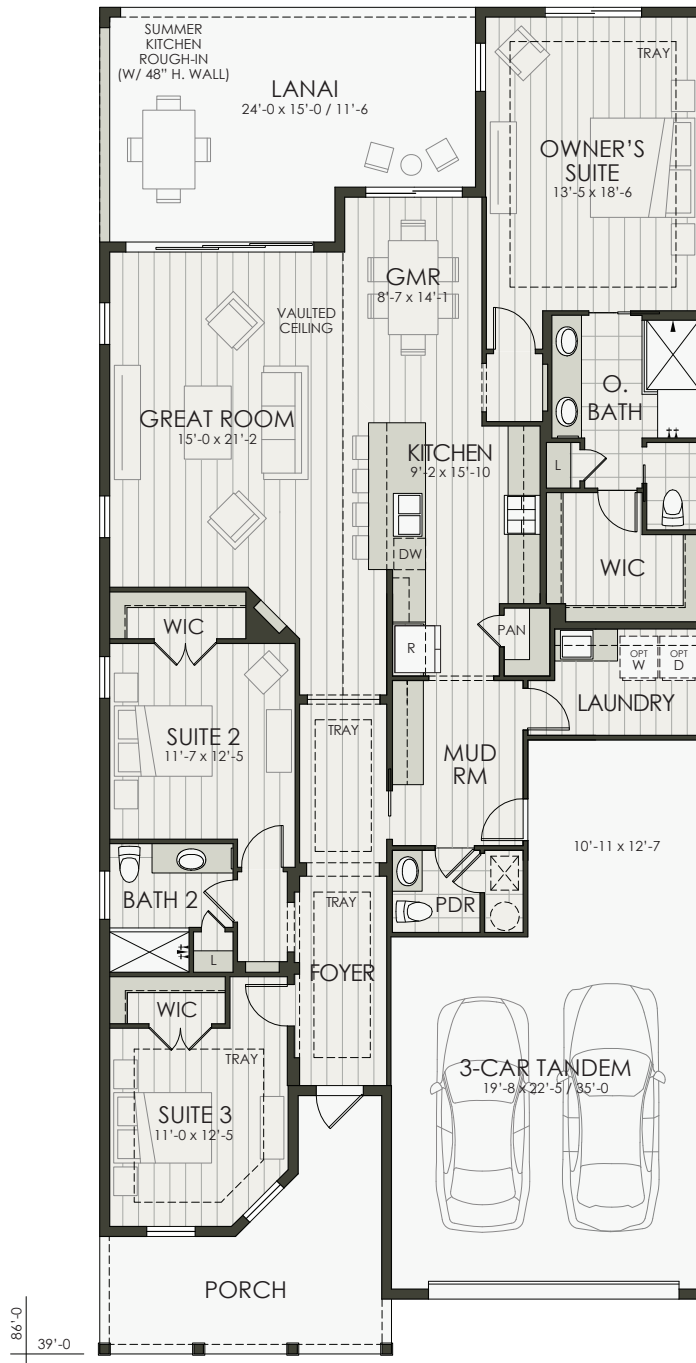


LakeHouse Cove at Waterside

1060 Waterline Court (Lot 423)

Clipper Series

Cay
\$999,900



Inventory Home To Be Garage Right

Developer reserves the right to modify floor plans, elevations, specifications, features and prices without prior notice. Square footage and room sizes are approximate. Exterior treatments, window locations and room configurations may vary with elevation. Some decorating treatments in and around the model homes may not be included in the list price and are for display purposes only. All renderings and floor plans are artistic conceptions, and are not intended to be an actual depiction of the buildings, fencing, driveways or landscaping. © 2023 Homes by Towne®



Homes by Towne
homesbytowne.com

LAKEHOUSE COVE AT WATERSIDE MODEL CENTER: 7915 Waterbend Trail | Sarasota, FL 34240 | 941-361-2536

HOMES BY TOWNE REALTY INC. SALES ASSOCIATES:

Sarah Lowry slowry@homesbytowne.com | 941-400-9026

Rita Suarez rsuarez@homesbytowne.com | 239-220-6341

Lee Trompke ltrompke@homesbytowne.com | 941-737-8538

Marissa Stephenson mstephenson@homesbytowne.com | 941-448-1755



07/01/24