

# LakeHouse Cove at Waterside

1088 Waterline Court (Lot 416)  
Clipper Series

Genoa  
\$1,094,900

## Genoa

Available April 2025

2,538 sq. ft.

3 Bedroom

3 Bath

Den

Bonus Room

3 Car Tandem Garage

(Inventory Home To Be Garage Right)



## New Home Features

- Coastal Elevation
- Tray Ceilings in Foyer, Den, Great Room, Owner's Suite, Good Morning Room, and Bonus Room
- Upgraded Kitchen Cabinets
- Gourmet Kitchen with GE Appliances
- Upgraded Quartz Countertops in Kitchen and Bathrooms
- Upgraded Kitchen Sink
- Below Kitchen Cabinet LED Lighting
- Upgraded Tile in Kitchen, Baths 2 & 3, Foyers 1 & 2, Mud Room, Laundry Room, Dinette (Good Morning Room), Great Room, Owner's Suite, Owner's Walk-in Closet, Den, and Suite 2
- Frameless Glass Shower Enclosure with Pivot Door in Bath 2
- Upgraded Bathroom Cabinets
- Upgraded Moen Plumbing Fixtures
- Additional Lighting
- Additional Electrical
- Great Room Opens to Large Lanai
- Half Wall with Rough-in for Future Summer Kitchen
- Impact Rated Windows and Sliding Glass Doors
- Modified Custom Layout with 16' Impact Sliding Glass Door in Great Room

## Community Features

- Amenity Center featuring: Lakehouse, Pool, Spa, Fitness Center, Boathouse, Play Areas, Event Lawn, Sunset Lawn, Poolside Cabanas, Bocce Court, Pickleball Courts, Firepits, 2 Dog Parks, Trail System, and Water Taxi Pick Up Location
- Convenient Access to Future Downtown Waterside Place
- Close to Gulf Coast Beaches
- Minutes Away to World Class Shopping and Dining
- Close to Several Area Hospitals
- Sarasota International Airport - 25 Minutes
- Tampa International Airport - 70 Minutes



Homes by Towne  
homesbytowne.com

LAKEHOUSE COVE AT WATERSIDE MODEL CENTER: 7915 Waterbend Trail | Sarasota, FL 34240 | 941-361-2536

HOMES BY TOWNE REALTY INC. SALES ASSOCIATES:

Sarah Lowry [slowry@homesbytowne.com](mailto:slowry@homesbytowne.com) | 941-400-9026

Rita Suarez [rsuarez@homesbytowne.com](mailto:rsuarez@homesbytowne.com) | 239-220-6341

Lee Trompke [ltrompke@homesbytowne.com](mailto:ltrompke@homesbytowne.com) | 941-737-8538

Marissa Stephenson [mstephenson@homesbytowne.com](mailto:mstephenson@homesbytowne.com) | 941-448-1755

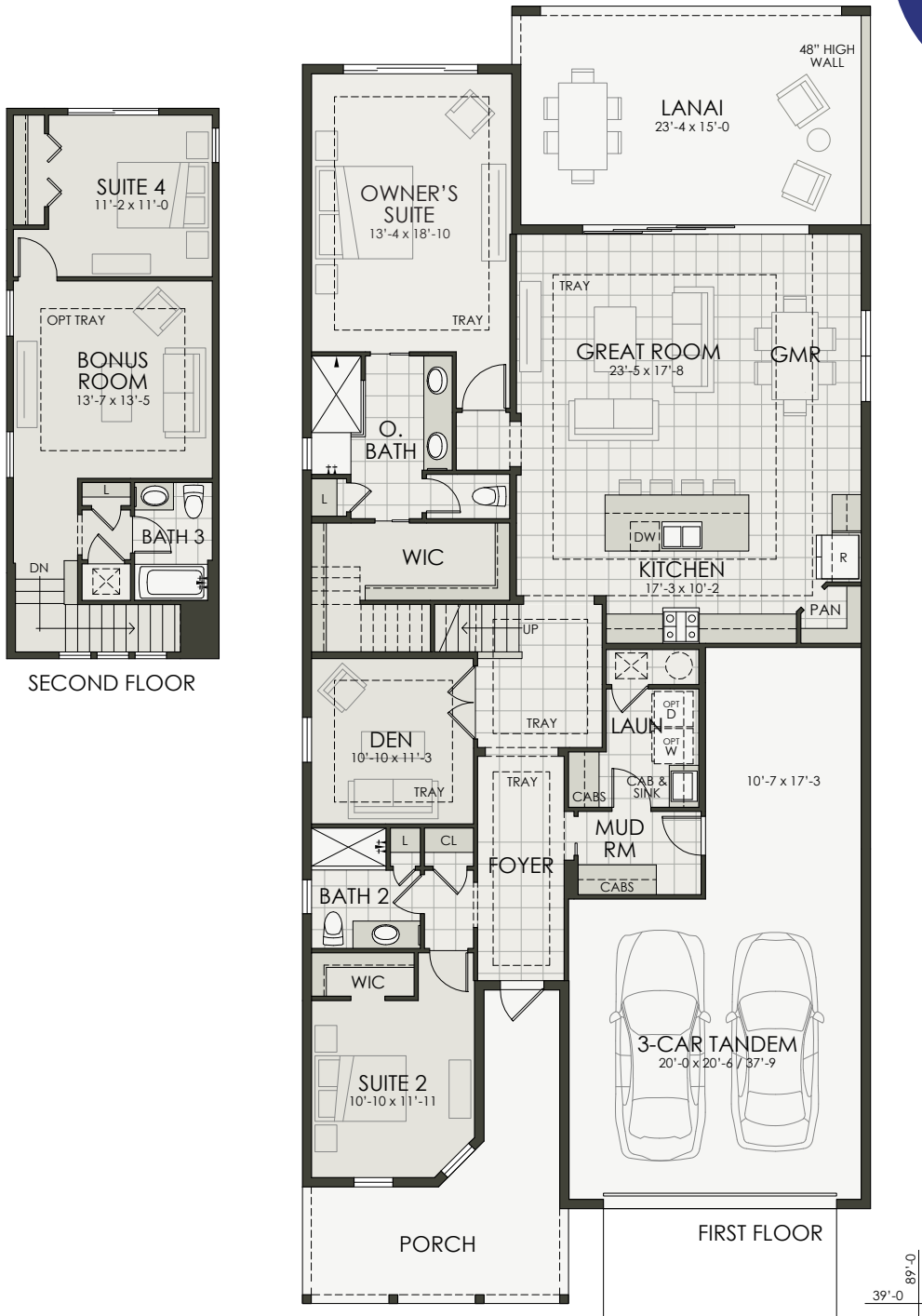


# LakeHouse Cove at Waterside

1088 Waterline Court (Lot 416)

Clipper Series

Genoa  
\$1,094,900



## Inventory Home To Be Garage Right

Developer reserves the right to modify floor plans, elevations, specifications, features and prices without prior notice. Square footage and room sizes are approximate. Exterior treatments, window locations and room configurations may vary with elevation. Some decorating treatments in and around the model homes may not be included in the list price and are for display purposes only. All renderings and floor plans are artistic conceptions, and are not intended to be an actual depiction of the buildings, fencing, driveways or landscaping. © 2024 Homes by Towne®



Homes by Towne  
homesbytowne.com

LAKEHOUSE COVE AT WATERSIDE MODEL CENTER: 7915 Waterbend Trail | Sarasota, FL 34240 | 941-361-2536

HOMES BY TOWNE REALTY INC. SALES ASSOCIATES:

Sarah Lowry slowry@homesbytowne.com | 941-400-9026

Rita Suarez rsuarez@homesbytowne.com | 239-220-6341

Lee Trompke ltrompke@homesbytowne.com | 941-737-8538

Marissa Stephenson mstephenson@homesbytowne.com | 941-448-1755



05/17/24