

# Palmera at Wellen Park

17572 Foxtail Loop (Lot 446)  
Catamaran Series

Fairlead  
\$1,189,900  
with Pool

## Fairlead

Available Oct. 2026

3,023 sq. ft.  
3 Bedroom  
3 Bath  
Den  
3 Car Extended Garage  
Pool and Spa  
(Inventory Home To Be Garage Right)



## New Home Features

- Modern Mediterranean Elevation
- Tray Ceilings in Foyer, Den, Dining Room, and Owner's Suite
- Premium Cabinets Throughout
- Upgraded Quartz in Kitchen and Bathrooms
- Monogram Appliances
- Upgraded Kitchen Sink
- Above and Below Kitchen Cabinet LED Lighting
- Plank Floor Tile Throughout
- Flat Stock Baseboards 1" x 6" Throughout
- Upgraded Plumbing Fixtures
- Polyaspartic Garage Floor Coating
- Rough in on Existing Wall for Future Summer Kitchen
- Upgraded Wood Slat Closet Shelving
- Additional Lighting
- Additional Electrical
- Great Room Opens to Large Lanai with Pool, and Spa
- Impact Rated Glass Throughout

## Amenity Center

Resort-Style Pool with Lap Lanes  
Splash Pad  
Clubhouse  
Full Fitness Center  
Golf Simulator  
Pickleball Courts  
Golf Cart Friendly

On-site Dining  
Gathering Lawn  
Fire Pit Lookout  
Playground  
30 Miles of Trails and Pathways  
Lifestyle Specialist

## Convenient To

- Downtown Wellen Park
- Gulf Coast Beaches
- World Class Dining and Shopping
- Several Areas Hospitals
- Venice School System



Homes by Towne  
homesbytowne.com

PALMERA AT WELLEN PARK MODEL CENTER:

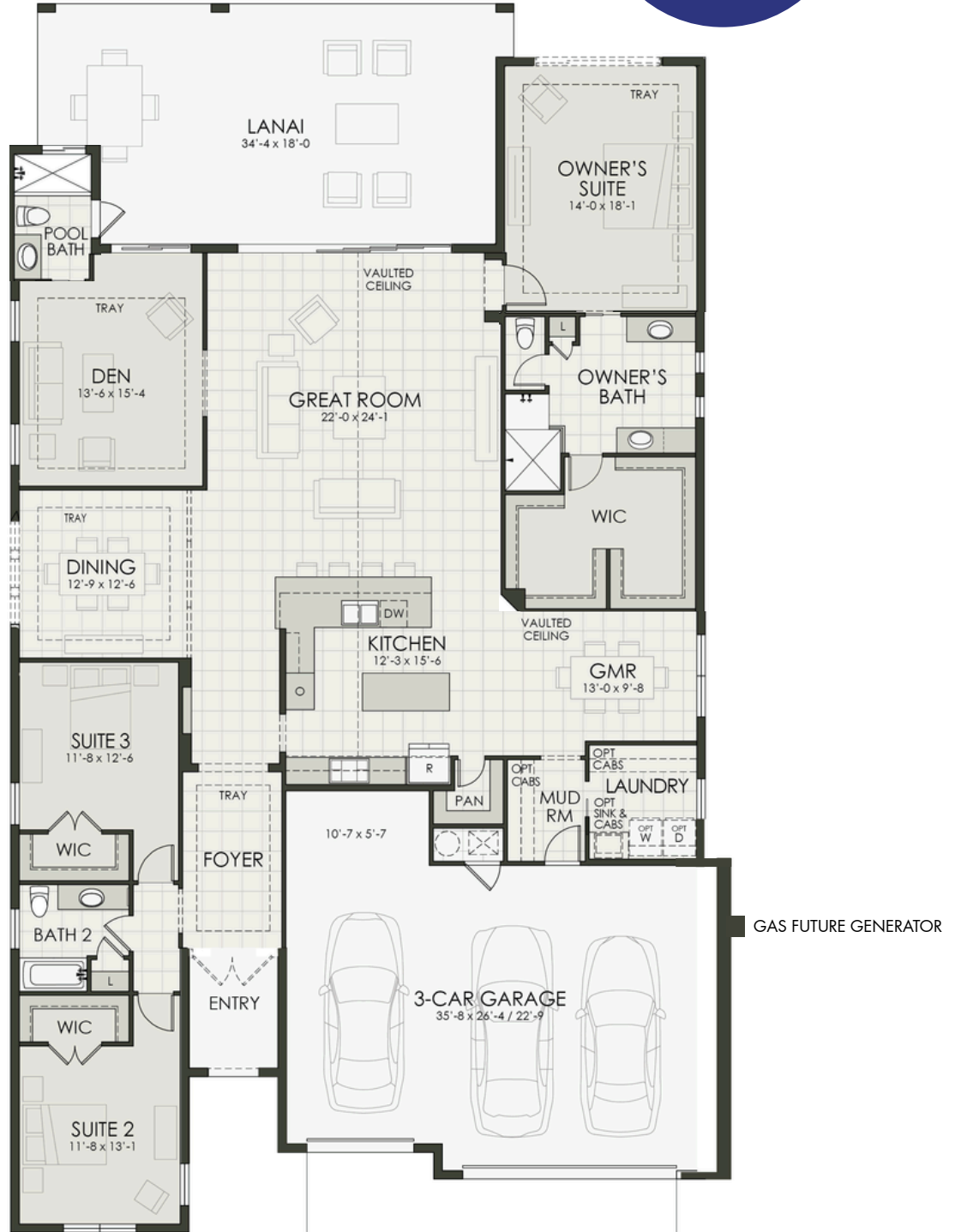
18188 Foxtail Loop, Venice, FL 34294  
941-361-2537 | palmera@homesbytowne.com

030426

# Palmera at Wellen Park

17572 Foxtail Loop (Lot 446)  
Catamaran Series

Fairlead  
**\$1,189,900**  
with Pool



Developer reserves the right to modify floor plans, elevations, specifications, features and prices without prior notice. Square footage and room sizes are approximate. Exterior treatments, window locations and room configurations may vary with elevation. Some decorating treatments in and around the model homes may not be included in the list price and are for display purposes only. All renderings and floor plans are artistic conceptions, and are not intended to be an actual depiction of the buildings, fencing, driveways or landscaping. © 2026 Homes by Towne®