



## Portside | Catamaran Series

3 Bedroom + Den + Study | 3 Bath | 3-Car Garage

## Shellstone at Waterside

### Area

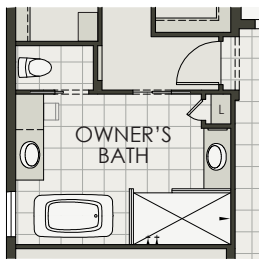
Living Area .....3,072 SF

Porch..... 79 SF

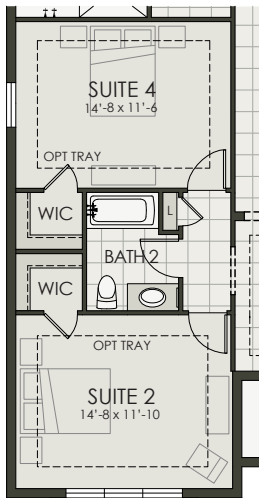
Covered Lanai.....456 SF

Garage.....687 SF

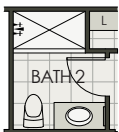
Total Area.....4,294 SF



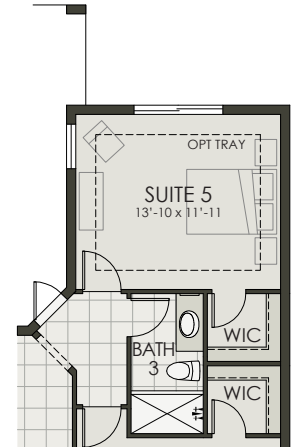
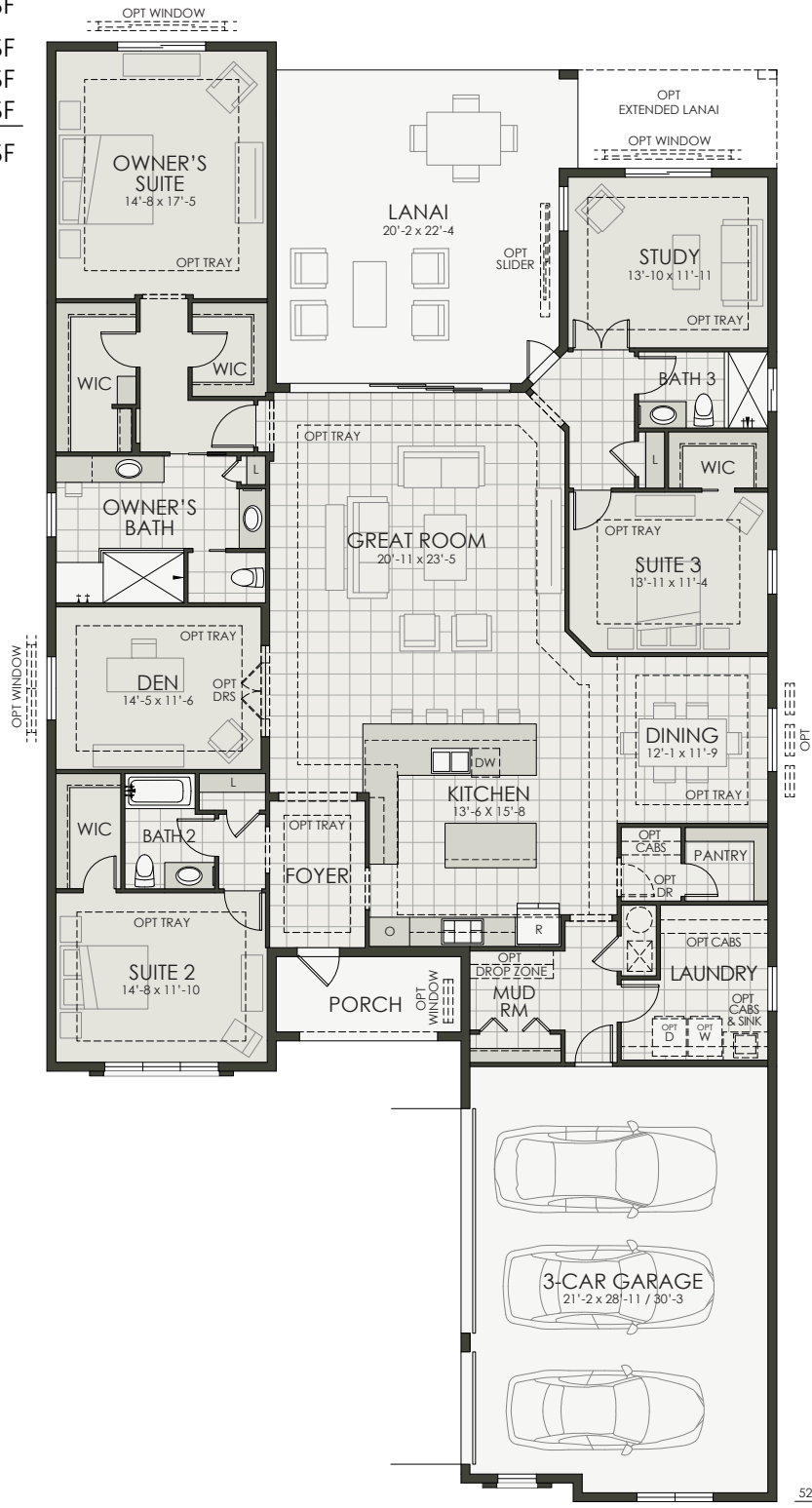
OWNER'S BATH  
W/ TUB OPTION



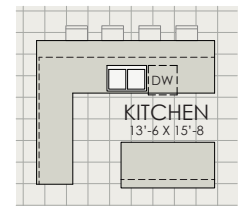
SUITE 4 OPTION



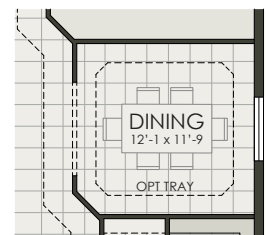
BATH 2  
SHOWER OPTION



SUITE 5 OPTION



OPEN KITCHEN  
OPTION



ENCLOSED DINING ROOM  
OPTION

### Coastal Elevation

## Portside | Catamaran Series

3 Bedroom + Den + Study | 3 Bath | 3-Car Garage

## Shellstone at Waterside

### Coastal

Living Area .....	3,072 SF
Porch.....	79 SF
Covered Lanai.....	456 SF
Garage.....	687 SF
Total Area.....	4,294 SF



### West Indies

Living Area .....	3,072 SF
Porch.....	79 SF
Covered Lanai.....	456 SF
Garage.....	689 SF
Total Area.....	4,296 SF



### Craftsman

Living Area .....	3,072 SF
Porch.....	79 SF
Covered Lanai.....	456 SF
Garage.....	689 SF
Total Area.....	4,296 SF

